



BROSURE FIRE ALARM SYSTEM



ARTRA FIRE PROTECTION

Addressable Fire Alarm System
Conventional Fire Alarm System
Semi Addressable System



Simply, User Friendly, & Consultation free



ADDRESSABLE CONTROL PANEL FIRE ALARM 1 LOOP

FEATURE :

- Up to 324 addresses on one loop
- An easy to read, 4.3" color screen LCD with a resolution of 480x2
- Zone indication and control panel(ZCP) for 32 zones gives a quick indication of the location of an alarm
- Record capacity of 1000 historical events for each of historical fire, historical fault and historical operation
- An independently programmable conventional sounder circuit output
- Integral power supply and battery
- Integral printer
- Flexible and intuitive cause and effect programming on front panel
- Zone test, point test and module start/stop testing facilitate the commissioning
- U-disk interface makes the load and save of configuration or historical data convenient for system commissioning and maintenance
- Hierarchy management with three access levels
- Anti-tamper protection by a key lock
- CAN bus for interconnection of up to 20 FACPs and RS485 for connection with up to 30 fire indicating panels per FACP



EN

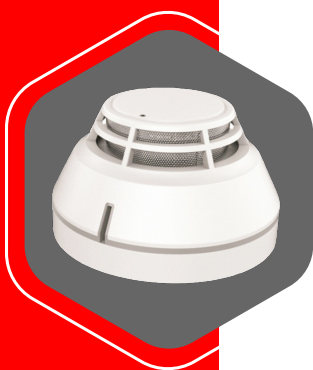


TECHNICAL PARAMETER



Type	AR-AFA-L-1L
Power Supply	
Mains supply	230VAC 63Hz max current 0.8A
Main fuse	T3.15AL250V
Operating voltage	18.5V ~ 30VDC
Recomended mains cable	size 0,75mm ²
Power rating	I _{max.a} =1,2A ; I _{max.b} =2,6A ; I _{min} =0,65A
Max. charging current	1,2A
Battery supply current	4A
Battery capacity	Max 2x12V/17Ah ; Min. 2x12V/12Ah
Max. internal resistance	1,5Ω
Battery fuse	F8AL250V
Quescient current	<0,4A
OUTPUTS	
S.C Output	18.5V ~ 30VDC
Max. output current	0,5A
Fuse rating	F1AL250V
End of Line	4K7
Recomended type cable	1,5mm ²
Cable diameter	1mm ² ~ 2mm ²
Transmission distance	≤1500m
Max. num sounder @50mA	20
F. P. E. out	8.5V ~ 30VDC
Max. output current	0,5A
Fuse rating	F1AL250V
End of line	4K7
Recommended type cable	1,5mm ²
Cable diameter	1mm ² ~ 2mm ²
Transmission distance	≤1500m
Fault out	Dry contact max. 2A@30VDC
Recomended type cable	1,5mm ²
Cable diameter	1mm ² ~ 2mm ²
Output voltage	18.5V ~ 30VDC
Max. output current	0,6A
Fuse rating	F1AL250V
Recomended type cable	1,5mm ²
Cable diameter	1mm ² ~ 2mm ²
INPUT	
Class change	Passive
Cable resistance	≤500Ω
Recomended type cable	twistead pair 1,5mm ²
Cable diameter	1mm ² ~ 2mm ²
LOOP	
Loop in out	16.5V ~ 30VDC pulse
Output current	0 ~ 0,3A
Loop type	Class A
Recomended type cable	1,5mm ²
Transmission distance	≤1000m
Cable diameter	1mm ² ~ 5mm ²
Network communication	
RS-485 max. num FIPs	30
Transmission rate	9600bps
Recomended type cable	twistead pair 1mm ²
Transmission distance	≤1000m
Cable diameter	1mm ² ~ 5mm ²
CAN max num.	20
Transmission rate	optional 10K, 20K, 50K, 100K bps
Recomended type cable	twistead pair 1mm ²
Transmission distance	≤1000m
Cable diameter	1mm ² ~ 5mm ²
Physical Dimension	
Approx. Dimension Panel	430 x 560 x 170mm
Approx. Weight	14Kg
Operating conditions	
Temp. range	0°C ~ 45°C
Humidity	95%

ACCESSORIES



ADDRESSABLE SMOKE DETECTOR

Type	AR-AFA-L-SD
Operating voltage	Loop 24V (18V~28V)
Standby current	<0.3mA
Alarm current	<3.5mA
Programming range	Occupying one address within 1~324
Sensitivity	
Operating temperature	-10° ~ +55° C
Relative humidity	≤95%, non condensing
Material	ABS Plastics
Dimension	ø100mm, H : 58mm
Weight	128g



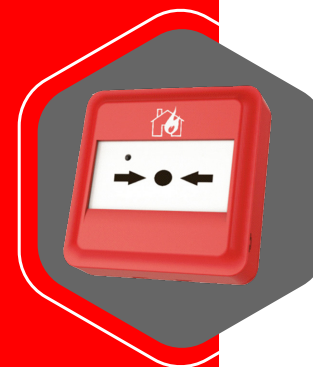
ADDRESSABLE HEAT DETECTOR

Type	AR-AFA-L-HD
Operating voltage	Loop 24V (18V~28V)
Standby current	<0.3mA
Alarm current	<3.5mA
Programming range	Occupying one address within 1~324
Class	A2 max temp. 70° C
Operating temperature	-10° ~ +55° C
Relative humidity	≤95%, non condensing
Material	ABS Plastics
Dimension	ø100mm, H : 60mm
Weight	115g



ADDRESSABLE GAS DETECTOR

Type	AR-AFA-L-GD
Operating voltage	DC24V & Loop 24V (18V~28V)
Standby current	<0.3mA
Alarm current	<3.5mA
Programming range	Occupying one address within 1~324
Response time	30s
Activation	LPG 5000ppm (10%LEL)
Operating temperature	-10° ~ +55° C
Relative humidity	≤95%, non condensing
Material	ABS Plastics
Dimension	ø104mm, H : 48mm
Weight	128g



ADDRESSABLE MANUAL CALL POINT

Type	AR-AFA-L-MCP
Operating voltage	Power DC24V & Loop 24V (18V~28V)
Standby current	Power <2mA & Loop <0.3mA
Action current	Power <15mA & Loop <5mA
Programming range	Occupying one address within 1~324
Programming method	Electronically address
Operating temperature	-10° ~ +55° C
Relative humidity	≤95%, non condensing
Material	ABS Plastics
Dimension	86mm x 86mm x 41mm
Weight	148g

ACCESSORIES



ADDRESSABLE REPEATER

Type	AR-AFA-L-RPT
Operating voltage	Power 24VDC
Power consumption	<3W
Communication	RS485
Operating temperature	-10° ~ +55°C
Relative humidity	≤95%, non condensing
Material	ABS Plastics
Dimension	ø100mm, H : 58mm
Weight	128g



ADDRESSABLE STROBE SOUNDER

Type	AR-AFA-L-SB
Operating voltage	Power 24VDC & Loop 24V (18V~28V)
Power consumption	≤3,2W
Flash color & frequency	White & 50Hz
Programming range	Occupying one address within 1~324
IP Rating	IP21C
Operating temperature	-10° ~ +55°C
Relative humidity	≤95%, non condensing
Material	ABS Plastics
Dimension	ø100mm, H : 100,5mm
Weight	270g



LOOP ISOLATOR MODULE

Type	AR-AFA-L-IM
Operating voltage	Loop 24V (18V~28V)
Standby current	<3mA
Capacity	32 device
Indicate	Yellow (flashes when polling, illuminates in action.)
Operating temperature	-10° ~ +55°C
Relative humidity	≤95%, non condensing



INPUT OUTPUT MODULE

Type	AR-AFA-L-IO
Operating voltage	Power 24VDC & Loop 24V (18V~28V)
Standby current	Power <2mA & Loop <0,8mA
Action current	Power <215mA & Loop <5mA
Output capacity	1A@DC30V
Input mode setting	NC or NO input mode can be set by the jumper JP4
Programming range	Occupying one address within 1~324
Operating temperature	-10° ~ +55°C
Relative humidity	≤95%, non condensing

ADDRESSABLE CONTROL PANEL FIRE ALARM 1 - 8 LOOP

FEATURE :

- Delay function for zones for Notification Appliance Circuits (NACs)
- 7" Touchscreen LCD Color Display which gives necessary and additional information as described in EN:54-2
- 2 wire cable for all addressable devices
- Zone test and individual device testing
- Zone Disable and individual device isolation
- Delay, override and abort functionality
- User friendly, easily configurable windows using panel
- 250 intelligent detectors or modules for one loop circuit
- Up to 8 Loop cards can be installed and configured
- Interconnection ofpanels and other equipments
- 2000* events can be stored in the history
- Mini- Printer to print the status of events
- Network with Central Control Panel
- Access Level entry to control and configure panel
- Integral power supply with charger
- Circuits can be configured as Class A or Class B
- Fire Alarm, Fault (Trouble) and Supervisory relays
- Earth Fault detection
- CAN BUS Network System
- Network available option : GSM/IP/Cloud/Mobile

TECHNICAL PARAMETER

Type	AR-AFA-2W-1L ; 2L;.....8L
Operating voltage	220VAC 50/60Hz
Loop capacity	250 device / loop
Max. Loop	1~8 Loop
Battery	2x12V5Ah
24VDC output current	Max. 2x3A
Operating temperature	-10° ~ +55°C
Relative humidity	≤95%, non condensing



ACCESSORIES

ADDRESSABLE SMOKE DETECTOR

Type	AR-AFA-2W-SD
Operating voltage	Loop 24V (18V~28V)
Alarm current	≤3mA
Working current	≤2.5mA
Programming range	Occupying one address within 1-250
Sensitivity	0,1-0,15dB/m
Standard num. ref.	Comply EN54-7
Operating temperature	-10° ~ +55°C
Relative humidity	≤95%, non condensing
Material	ABS Plastics
Dimension	ø99,8mm, H : 58mm

ADDRESSABLE HEAT DETECTOR

Type	AR-AFA-2W-HD
Operating voltage	Loop 24V (18V~28V)
Alarm current	≤3mA
Working current	≤2.5mA
Programming range	Occupying one address within 1-250
Fixed temperature	57°C A2R
Rate of rise	7,1°C / 5s
Standard num. ref.	Comply EN54-5
Operating temperature	-10° ~ +55°C
Relative humidity	≤95%, non condensing
Material	ABS Plastics
Dimension	ø99,8mm, H : 58mm

ADDRESSABLE SMOKE HEAT DETECTOR

Type	AR-AFA-2W-SHD
Operating voltage	Loop 24V (18V~28V)
Alarm current	≤3mA
Working current	≤2.5mA
Programming range	Occupying one address within 1-250
Sensitivity	0,1-0,15dB/m
Fixed temperature	57°C A2R
Rate of rise	7,1°C / 5s
Operating temperature	-10° ~ +55°C
Relative humidity	≤95%, non condensing
Material	ABS Plastics
Dimension	ø99,8mm, H : 58mm

ADDRESSABLE MANUAL CALL POINT

Type	AR-AFA-2W-MCP
Operating voltage	Loop 24V (18V~28V)
Work current	≤4mA
Programming range	Occupying one address within 1-250
Protection level	IP30
Operating temperature	-10° ~ +55°C
Relative humidity	≤95%, non condensing
Material	ABS Plastics



ACCESSORIES

ADDRESSABLE ALARM BELL



Type	AR-AFA-2W-AB
Operating voltage	Loop 24V (18V~28V)
Standby current	≤3mA
Alarm current	≤50mA
Programming range	Occupying one address within 1-250
Sound rating	100dB
Operating temperature	-10° ~ +55°C
Relative humidity	≤95%, non condensing
Certificate	ISO9001/CE/ROHS
Dimension	ø110mm

ADDRESSABLE STROBE SOUNDER



Type	AR-AFA-2W-SB
Operating voltage	Loop 24V (18V~28V)
Standby current	<3mA
Work current	10 ~ 60 mA
Programming range	Occupying one address within 1-250
Alarm SPL	≥100dB
Flash periode	≤1,0 s
Operating temperature	-10° ~ +55°C
Relative humidity	≤95%, non condensing
Material	ABS Plastics

ADDRESSABLE ISOLATOR MODULE



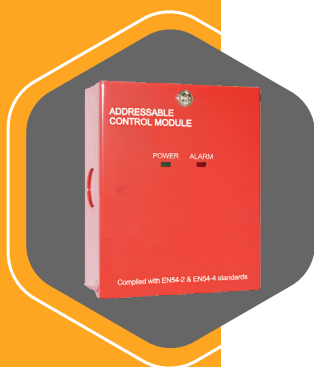
Type	AR-AFA-2W-IM
Operating voltage	Loop 24V (18V~28V)
Standby current	≤25mA
Alarm current	≤80mA
Output current	≤900ma
Protection level	IP30
Operating temperature	-10° ~ +55°C
Relative humidity	≤95%, non condensing

ADDRESSABLE MONITOR MODULE



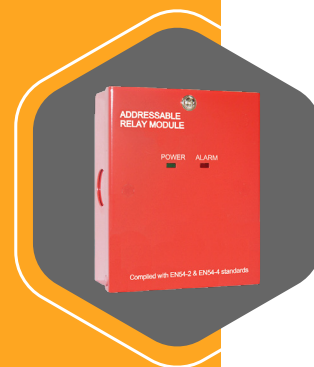
Type	AR-AFA-2W-MM
Operating voltage	Loop 24V (18V~28V)
Standby current	≤5mA
Alarm current	≤25mA
Programming range	Occupying one address within 1-250
Operating temperature	-10° ~ +55°C
Relative humidity	≤95%, non condensing

ACCESSORIES



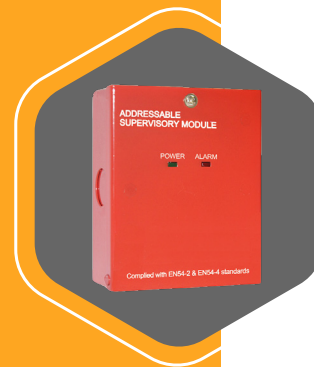
ADDRESSABLE CONTROL MODULE

Type	AR-AFA-2W-CM
Operating voltage	Loop 24V (18V~28V)
Standby current	≤5mA
Load capacity	≤200mA
Programming range	Occupying one address within 1-250
Protection level	IP30
Operating temperature	-10° ~ +55°C
Relative humidity	≤95%, non condensing



ADDRESSABLE RELAY MODULE

Type	AR-AFA-2W-RM
Operating voltage	Loop 24V (18V~28V)
Standby current	≤3mA
Alarm current	≤30mA
Programming range	Occupying one address within 1-250
Relay capacity	2A @24VDC
Protection level	IP30
Operating temperature	-10° ~ +55°C
Relative humidity	≤95%, non condensing



ADDRESSABLE SUPERVISORY MODULE

Type	AR-AFA-2W-SM
Operating voltage	Loop 24V (18V~28V)
Standby current	≤5mA
Aux output	≤200mA @ 24VDC
Programming range	Occupying one address within 1-250
Protection level	IP30
Operating temperature	-10° ~ +55°C
Relative humidity	≤95%, non condensing



ADDRESSABLE ANNUNCIATOR

Type	AR-AFA-2W-ANN
Operating voltage	Loop 24V (18V~28V)
Working current	10 ~ 30mA
Programming range	Occupying one address within 1-250
Operating temperature	-10° ~ +55°C
Relative humidity	≤95%, non condensing

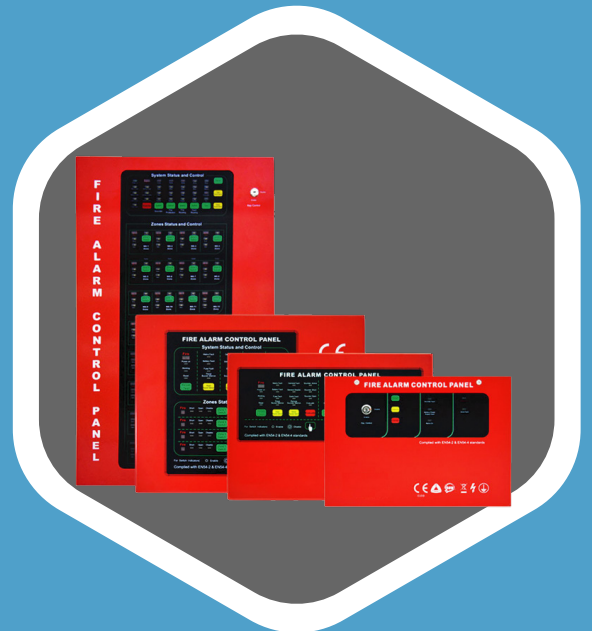
CONVENTIONAL CONTROL PANEL FIRE ALARM

FEATURE :

- Modularized design, the panel can expand from 1 zone to 32 zone easily
- 2 level control mode by a lock
- 24VDC and 5VDC power supply output
- FIRE and FAULT signal output
- 2 General sounders output
- Each zone has 1 circuit detectors input
- Each zone can be disable by a button
- RESET button to reset the panel
- SILENCE button to stop buzzer and sounders
- EVACUATE button to start a manual fire alarm immediatly
- Battery low protection function, while lower than 21VDC
- Battery will be cut off automatically until the mains power is on
- Optional GSM module for fire alarm by SMS

TECHNICAL PARAMETER

Type	AR-CFA-L-1Z ; 2Z ; 4Z ; 8Z ; 12Z ; ; 32Z
Operating voltage	110V~240 VAC
Total Output current	500mA @ 240VAC
Internal power supply	27,2 VDC
Battery	2 x 12VDC / 2Ah
End of line	6K8Ω
Operating temperature	-10° ~ +55°C
Humidity	≤95%, non condensing
Type 1 Zone	
Dimension	272 x 200 x 70mm
Weight	5,8Kg
Type 2 Zone	
Dimension	320 x 231 x 90mm
Weight	6,8Kg
Type 4 Zone	
Dimension	395 x 502 x 124mm
Weight	9,6Kg
Type 8 Zone	
Dimension	395 x 502 x 124mm
Weight	9,6Kg
Type 12 ~ 32 Zone	
Dimension	362 x 565 x 124mm
Weight	12,5Kg



EN



ACCESSORIES



CONVENTIONAL SMOKE DETECTOR

Type	AR-CFA-C-SD
Operating voltage	9V~28VDC non polarized
Standby current	≤120μA @ 24VDC
Alarm current	≤15mA @ 24VDC
Smoke sensitivity	0,1 ~ 0,15dB/m
Operating temperature	-10° ~ +55°C
Relative humidity	≤95%, non condensing
Standard num. ref.	EN54:5
Dimension	ø99,45mm, H : 48,2mm



CONVENTIONAL HEAT DETECTOR

Type	AR-CFA-C-HD
Operating voltage	9V~28VDC non polarized
Standby current	≤120μA @ 24VDC
Alarm current	≤15mA @ 24VDC
Fixed temperature	57°C
Rate of rise	7,1°C / 5s
Operating temperature	-10° ~ +55°C
Relative humidity	≤95%, non condensing
Standard num. ref.	EN54:7
Dimension	ø99,45mm, H : 48,2mm



CONVENTIONAL CARBON MONOXIDE DETECTOR

Type	AR-CFA-C-COG
Operating voltage	9V~28VDC non polarized
Standby current	≤120μA @ 24VDC
Alarm current	<20mA
Detection threshold	≥150ppm (less than 2 minutes)
Operating temperature	-10° ~ +55°C
Relative humidity	≤95%, non condensing
Dimension	ø99,8mm, H : 48,2mm



CONVENTIONAL SMOKE HEAT DETECTOR

Type	AR-CFA-C-SHD
Operating voltage	9V~28VDC non polarized
Standby current	≤120μA @ 24VDC
Alarm current	≤15mA @ 24VDC
Smoke sensitivity	0,1 ~ 0,15dB/m
Fixed temperature	57°C
Rate of rise	7,1°C / 5s
Operating temperature	-10° ~ +55°C
Relative humidity	≤95%, non condensing
Standard num. ref.	EN54:7
Dimension	ø99,45mm, H : 48,2mm

ACCESSORIES



CONVENTIONAL SMOKE DETECTOR

Type	AR-CFA-L-SD
Operating voltage	9V~28VDC non polarized
Standby current	≤120μA @ 24VDC
Alarm current	≤15mA @ 24VDC
Smoke sensitivity	0,1 ~ 0,15dB/m
Operating temperature	-10° ~ +55°C
Relative humidity	≤95%, non condensing
Standard num. ref.	EN54:5
Dimension	ø99,45mm, H : 48,2mm



CONVENTIONAL HEAT DETECTOR

Type	AR-CFA-L-HD
Operating voltage	9V~28VDC non polarized
Standby current	≤120μA @ 24VDC
Alarm current	≤15mA @ 24VDC
Fixed temperature	57°C
Rate of rise	7,1°C / 5s
Operating temperature	-10° ~ +55°C
Relative humidity	≤95%, non condensing
Standard num. ref.	EN54:7
Dimension	ø99,45mm, H : 48,2mm



CONVENTIONAL FLAME DETECTOR

Type	AR-CFA-UV-FD
Operating voltage	12V~30VDC non polarized
Standby current	≤10mA @ 24VDC
Alarm current	180 ~ 290 mA
Detection angle	110°
Detection sensitivity	Grade 1 ; 25m @ flame (33x33cm H 5cm 2Kg ethanol)
Output relay	1A @24VDC
Protecting rating	IP32
Operating temperature	-10° ~ +55°C
Relative humidity	≤95%, non condensing
Dimension	ø103mm, H : 45mm
Weight	153g



CONVENTIONAL LPG GAS DETECTOR

Type	AR-CFA-C-GD
Operating voltage	9V~28VDC non polarized
Standby current	≤120μA @ 24VDC
Alarm current	<20mA
Detection threshold	≥150ppm (less than 2 minutes)
Operating temperature	-10° ~ +55°C
Relative humidity	≤95%, non condensing
Dimension	ø99,8mm, H : 48,2mm

ACCESSORIES



CONVENTIONAL MANUAL CALL POINT

Type	AR-CFA-MCP
Operating voltage	24VDC
Max. current	8A @ 24VDC
Contact resistance	≤0,02 Ω
Operating temperature	-10° ~ +55°C
Relative humidity	≤95%, non condensing



CONVENTIONAL MANUAL PULL STATION

Type	AR-CFA-MPS
Operating voltage	9V~28V
Alarm current	45mA @ 24VDC
Operating temperature	-10° ~ +55°C
Relative humidity	≤95%, non condensing
Dimension	140mm x 105mm x 45mm
Weight	220g



CONVENTIONAL ALARM BELL

Type	AR-CFA-BELL
Operating voltage	12V ~24VDC
Working current	50mA @ 24VDC
Volume dB	≥96dB
Operating temperature	-10° ~ +55°C
Relative humidity	≤95%, non condensing
Dimension	6"
Weight	0,9kg



CONVENTIONAL STROBE SOUNDER

Type	AR-CFA-STROBE
Operating voltage	16V~30VDC
Working current	100mA ~ 150mA
Flash intensity	≥1,2WS
Flash period	≤1,5s
Alarm sound	≥100dB
Flash light lifespan	≥40000 Time
Alarm sound tipe	3 sound (ambulance, police car, fire truck)
Operating temperature	-10° ~ +55°C
Relative humidity	≤95%, non condensing

ACCESSORIES



REMOTE INDICATING LAMP

Type	AR-CFA-RIL
Operating voltage	24VDC
mAX. current	8A
Contact resistance	≤0,1Ω
Operating temperature	-10° ~ +55°C
Relative humidity	≤95%, non condensing
Compatible	Conventiona system



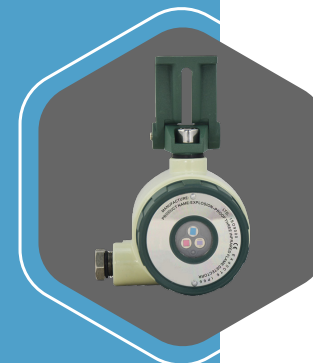
UV FLAME DETECTOR EXPLOTION PROOF

Type	AR-EXP-UV-FLAME
Operating voltage	18V-30VDC
Monitoring current	≤15mA
Alarm current	≤35mA
Detection	Angle 120° Distance 60m
Warming up	Energized after 60s
Alarm treshold	1 ~ 5 adjustable
Alarm delay	0 ~ 30sadjustable
Output contact	1A @ 30VDC
Indicators	3 indicator status
Operating temperature	-10° ~ +55°C
Relative humidity	≤95%, non condensing



IR2 FLAME DETECTOR EXPLOTION PROOF

Type	AR-EXP-IR2-FLAME
Operating voltage	18V-30VDC
Monitoring current	≤15mA
Alarm current	≤35mA
Detection	Angle 120° Distance 60m
Warming up	Energized after 60s
Alarm treshold	1 ~ 5 adjustable
Alarm delay	0 ~ 30sadjustable
Output contact	1A @ 30VDC
Indicators	3 indicator status
Operating temperature	-10° ~ +55°C
Relative humidity	≤95%, non condensing

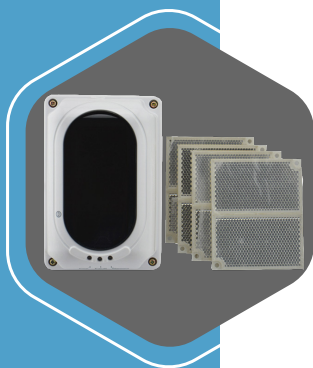


IR3 FLAME DETECTOR EXPLOTION PROOF

Type	AR-EXP-IR3-FLAME
Operating voltage	18V-30VDC
Monitoring current	≤15mA
Alarm current	≤35mA
Detection	Angle 120° Distance 60m
Warming up	Energized after 60s
Alarm treshold	1 ~ 5 adjustable
Alarm delay	0 ~ 30sadjustable
Output contact	1A @ 30VDC
Indicators	3 indicator status
Operating temperature	-10° ~ +55°C
Relative humidity	≤95%, non condensing

ACCESSORIES

SMOKE BEAM DETECTOR



Type	AR-CFA-SBEAM
Operating voltage	16V~28VDC
Debug current	≤20mA
Monitoring current	≤12mA
Alarm current	≤22mA
Power consumption	<3W
Operating temperature	-10° ~ +55°C
Relative humidity	≤95%, non condensing
Protective area	Maksimum 1400m ² (14 x 100m)
Optional distance	25meters with 1 reflector ; AR-CFA-SBEAM-25
	40meters with 1 reflector ; AR-CFA-SBEAM-40
	70meters with 4reflector ; AR-CFA-SBEAM-70
	100meters with 4 reflector ; AR-CFA-SBEAM-100

CONVENTIONAL REPEATER




Type	AR-CFA-L-RPT
Operating voltage	18V~28VDC
Comm. methode	RS485
Comm. baud rate	9600bps
Comm. distance	1000m
Operating temperature	-10° ~ +55°C
Relative humidity	≤95%, non condensing
Dimension	190mm x 270mm x 30mm



PT. ANUGRAH TATA SARANA

 Ruko Grand Galaxy City blok RRG2 No.23
Jakasetia, Bekasi Selatan, Kota Bekasi. 17147

 +6221 8274 8232

 info@artra.co.id

 www.artra.co.id

